



Deer Park Response Spot Weather Forecast

Time/Date: 3/23/2019 9:14 AM

Forecaster: Brian Kyle, Dan Reilly

Forecast Overview:






- Today: Southeast winds increasing to 10-15 mph with some gusts around 20 mph. Isolated showers possible, mainly in the afternoon. Thunderstorms unlikely.
- Tonight: Southeast winds diminishing to around 5-10 mph mid-late evening.
- Sunday: South winds 5-10mph in the morning increasing to 10-15mph. Isolated showers possible. Patchy sea fog Sunday night.

Weather Concerns Monday/Tuesday:

- Rain chances increasing as cap erodes and threat for thunderstorms and lightning increases Monday afternoon and evening. A cold front will move through the area late Monday afternoon or evening. Winds turning to the north in the wake of the front and becoming gusty.

Next update: Next planned update will be around 1 pm. Unless circumstances change, updates every 6 hours are expected.

[General Forecast for the ITC location \(click here for latest updates\):](#)

Today	Tonight	Sunday	Sunday Night	Monday
				
Isolated Showers	Partly Cloudy	Partly Sunny then Isolated T-storms	Mostly Cloudy then Isolated Showers	Isolated T-storms then Scattered Showers
High: 78 °F	Low: 60 °F	High: 79 °F	Low: 63 °F	High: 80 °F

Sunset Saturday: 7:34 PM CDT

Sunrise Sunday: 7:20 AM CDT





Deer Park Response Spot Weather Forecast

[Hourly Spot Forecast for the ITC location \(click here for latest updates\):](#)

Date	03/23														03/24									
Hour (CDT)	09	10	11	12	13	14	15	16	17	18	19	20	21	22	23	00	01	02	03	04	05	06	07	08
Temperature (°F)	63	67	70	74	77	75	77	77	75	73	71	69	67	65	65	63	63	63	61	61	61	61	61	63
Dewpoint (°F)	58	58	57	57	57	57	57	57	57	58	58	58	58	59	59	59	60	60	60	60	60	60	61	61
Surface Wind (mph)	7	8	10	11	14	14	14	14	13	13	11	10	9	8	8	8	8	7	6	6	5	5	6	6
Wind Dir	SE	SE	SE	SE	SE	SE	SE	SE	SE	SE	SE	SE	SE	SE	SE	SE	SE	SE	SE	SE	SE	SE	SE	SE
Gust			18	22	23	24	24	23	23	22														
Sky Cover (%)	60	65	74	78	75	69	63	54	46	38	34	39	37	37	42	50	49	47	47	46	55	52	54	53
Precipitation Potential (%)	12	16	16	16	16	16	16	16	16	16	9	9	9	7	7	7	12	12	12	12	12	12	7	7
Relative Humidity (%)	82	72	64	56	50	53	51	51	54	58	63	68	74	80	81	88	89	90	97	97	98	98	99	96
Rain	--	SChc	SChc	SChc	SChc	SChc	SChc	SChc	SChc	SChc	--	--	--	--	--	--	--	--	--	--	--	--	--	--
Thunder	--	--	--	--	--	--	--	--	--	--	--	--	--	--	--	--	--	--	--	--	--	--	--	--
Fog	--	--	--	--	--	--	--	--	--	--	--	--	--	--	--	--	--	--	--	--	--	--	--	--
Mixing Height (x100ft)	6	15	21	28	33	34	34	33	29	21	13	5	5	3	2	2	2	3	3	2	1	1	2	5
Lightning Activity Level	1	1	1	1	1	1	1	1	1	1	1	1	1	1	1	1	1	1	1	1	1	1	1	1
Transport Wind (mph)	18	17	17	17	17	17	17	17	18	20	20	21	23	23	23	24	24	23	22	21	20	18	16	17
Transport Wind Dir	S	S	S	S	S	S	S	S	S	S	S	S	S	S	S	S	S	S	S	S	S	S	S	S

Date	03/25																							
Hour (CDT)	09	10	11	12	13	14	15	16	17	18	19	20	21	22	23	00	01	02	03	04	05	06	07	08
Temperature (°F)	66	70	73	75	76	78	78	78	78	77	75	73	70	68	66	66	66	66	65	65	64	63	63	64
Dewpoint (°F)	62	63	63	63	63	63	63	64	64	63	63	63	63	63	63	63	63	63	63	63	63	63	63	64
Surface Wind (mph)	7	8	9	10	10	11	11	11	11	11	10	10	9	9	8	7	7	6	6	6	5	3	3	3
Wind Dir	S	S	S	S	S	S	S	S	S	S	S	S	S	S	S	S	S	S	S	S	SW	SW	SW	SW
Gust																								
Sky Cover (%)	61	56	62	73	74	71	70	69	65	62	59	58	58	57	52	47	43	44	47	51	55	57	58	58
Precipitation Potential (%)	7	7	7	7	21	21	21	21	21	21	8	8	8	8	8	8	16	16	16	16	16	16	23	23
Relative Humidity (%)	88	77	70	67	63	61	61	61	62	64	67	73	80	86	89	90	90	91	93	95	99	100	100	99
Rain	--	--	--	--	SChc	SChc	SChc	SChc	SChc	SChc	--	--	--	--	--	--	SChc	SChc	SChc	SChc	SChc	SChc	SChc	SChc
Thunder	--	--	--	--	SChc	SChc	SChc	SChc	SChc	SChc	--	--	--	--	--	--	--	--	--	--	--	--	SChc	SChc
Fog	--	--	--	--	--	--	--	--	--	--	--	--	--	--	--	--	--	--	--	--	--	--	--	--
Mixing Height (x100ft)	9	15	28	36	42	44	43	35	28	20	13	9	6	5	4	4	5	5	6	5	5	5	6	
Lightning Activity Level	1	1	1	1	2	2	2	2	2	2	1	1	1	1	1	1	1	1	1	1	1	2	2	
Transport Wind (mph)	17	17	16	16	16	16	16	16	16	16	16	17	17	17	18	18	17	16	15	14	13	13	12	10
Transport Wind Dir	S	S	S	S	S	S	S	S	S	S	S	S	S	S	S	S	S	S	SW	SW	SW	SW	SW	SW





Deer Park Response Spot Weather Forecast

[Galveston Bay Forecast \(click for the latest updates\):](#)

Today: Southeast winds increasing to 10 to 15 knots with some gusts to 15 to 20 knots. Bay slightly choppy. Isolated showers late morning/afternoon.

Tonight: Southeast winds 5 to 10 knots. Bay waters smooth.

Sunday: South winds 10 to 15 knots. Bay waters slightly choppy. A slight chance of showers. Isolated thunderstorms in the afternoon.

Sunday Night: South winds 5 to 10 knots. Bay waters smooth.

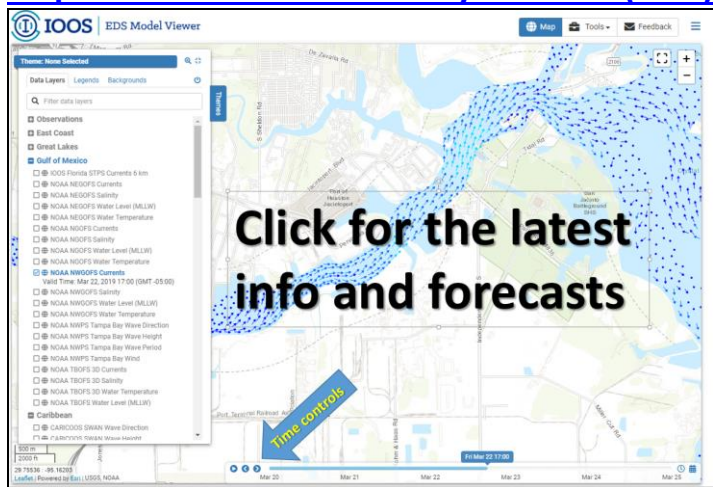
[Lynchburg Landing Tides \(click for more\):](#)

SAT: High 1227 pm, Low 635 pm, High 1057 pm

SUN: Low 6:18 am, High 150 pm, Low 731pm, High 1039pm

Tides/water levels will be running near normal levels through the weekend.

[Ship Channel & Galveston Bay Currents \(click\):](#)



Latest Water Temperature: 63°





Deer Park Response Spot Weather Forecast

[Aviation \(click here for latest nearby TAFS\):](#)

Terminal Aerodrome Forecasts are updated often! Please click the link below before making flying decisions:

KHOU - Houston/Hobby Arpt, TX, US

Issued at 1130 UTC 23 Mar 2019

Updated at 1207 UTC 23 Mar 2019

Potential Impact None Slight Moderate High

Time	1153Z	23/13Z	23/14Z	23/15Z	23/16Z	23/17Z	23/18Z	23/19Z	23/20Z	23/21Z	23/22Z	23/23Z	24/00Z	24/01Z	>>
Type	OBS	PRVL	PRVL	PRVL	PRVL	PRVL	PRVL	PRVL	PRVL	PRVL	PRVL	PRVL	PRVL	PRVL	
VIS	10	>6	>6	>6	>6	>6	>6	>6	>6	>6	>6	>6	>6	>6	
CIG	250	70	70	70	60	60	60	60	60	60	60	60	--	--	
Cover	BKN	BKN	BKN	BKN	OVC	OVC	OVC	OVC	OVC	OVC	OVC	OVC	SCT	SCT	
FltCat	VFR	VFR	VFR	VFR	VFR	VFR	VFR	VFR	VFR	VFR	VFR	VFR	VFR	VFR	
WX	--	--	--	--	--	--	--	--	--	--	--	--	--	--	
WDir	140	130	130	130	150	150	150	150	150	150	150	150	140	140	
WSpd	6	6	6	6	13	13	13	13	13	13	13	13	9	9	
WGst	--	--	--	--	20	20	20	20	20	20	20	20	--	--	

TAF

KHOU 231130Z 2312/2412 13006KT P6SM BKN070 BKN250
 FM231600 15013G20KT P6SM BKN060 OVC250
 FM240000 14009KT P6SM SCT050
 FM240600 14004KT P6SM BKN050
 FM241100 17007KT P6SM FEW025 BKN035

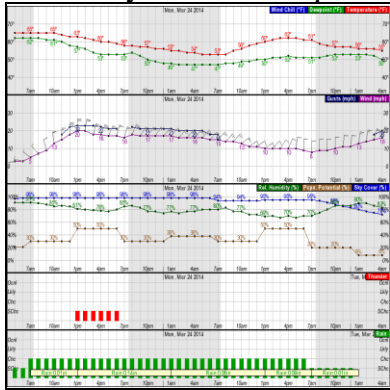




Deer Park Response Spot Weather Forecast

Links for the latest updates (clickable):

Hourly Weather Graph

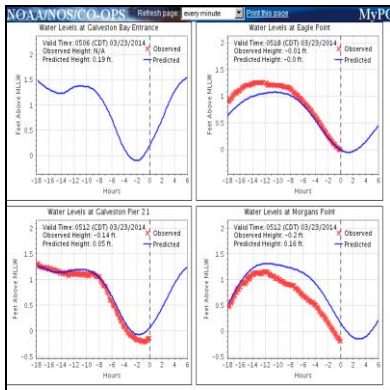


Forecast Discussion & Reasoning

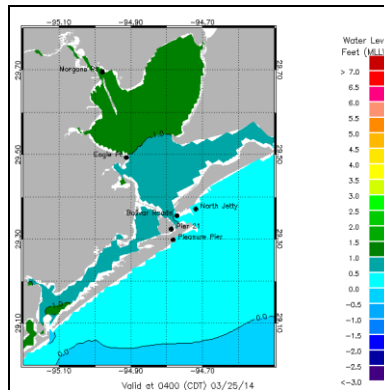


Water Levels (clickable):

PORTS water levels

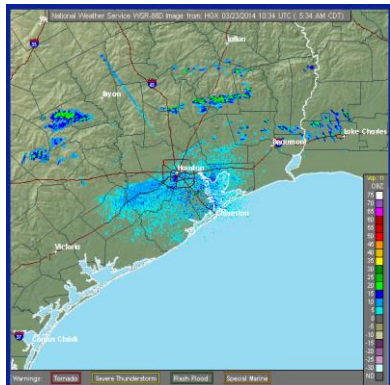


Water Level Forecast Model

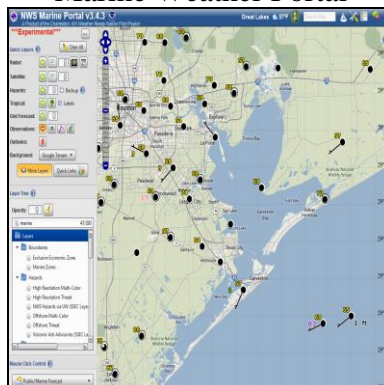


Other helpful links (clickable):

Radar



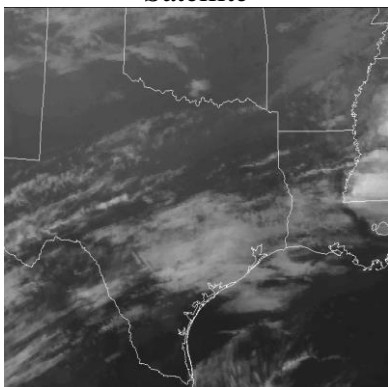
Marine Weather Portal





Deer Park Response Spot Weather Forecast

Satellite



SWAN Wind/Wave/Current Model

